

LED light  
& holder



Thank you for choosing the 200 Lumen Trionic LED Front Light.

This manual both shows how you attach the LED light on a Walker (left column below) and also how you attach it on a Veloped (right column below).

In the left-hand photo, **A** shows the holder attachment parts for a Walker (2 screws + 2 washers). **B** shows the holder attachment parts for a Veloped (1 screw + 1 knurled nut + 1 nut).

## Attaching the Light Holder

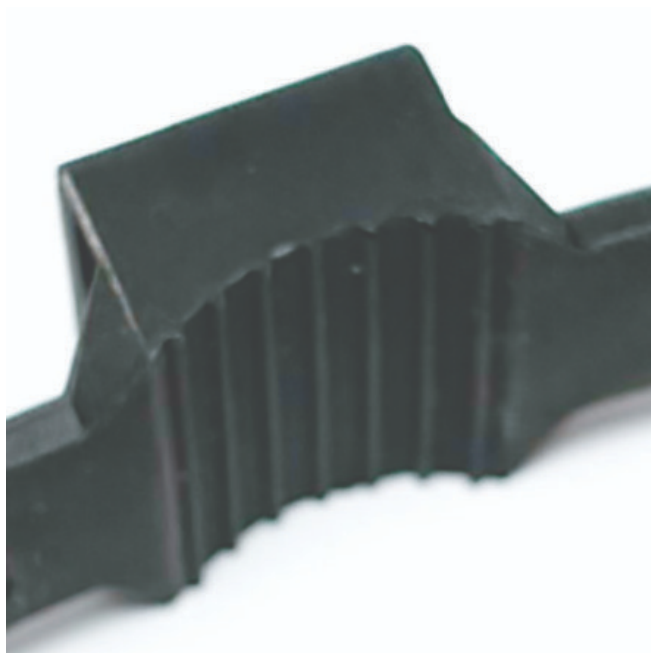
### Instructions for a Walker



**A1.** Of the two rubber straps included, choose the one with a 10-degree angled light attachment section.



### Instructions for a Veloped



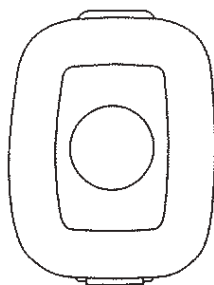
**A1.** Of the two rubber straps included, choose the one with a 0-degree angled light attachment section.



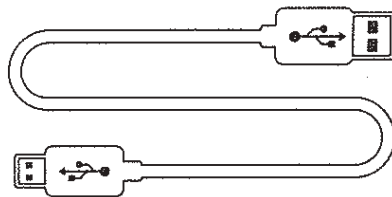
# Instructions for Use

---

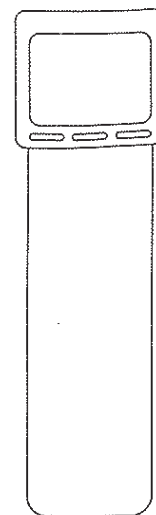
## The package contains



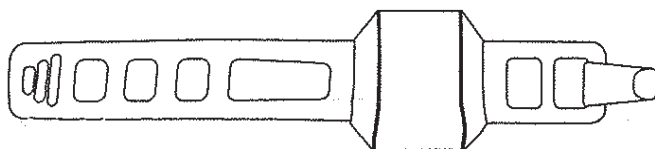
1. LED-light



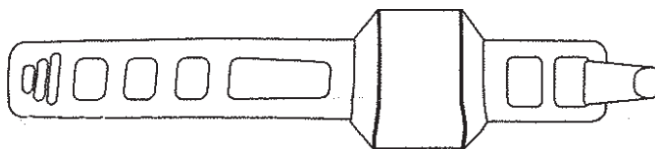
2. USB-C Cable



3. Headband



4. 0-degree attachment strap



5. 10-degree attachment strap

## Caution

It is normal for the battery to reach a high temperature (up to 104°F / 40°C) during charging due to chemical reactions within the battery. The battery may also become warm if it is not fully drained before charging.

Several factors can affect the battery's lifespan, including the type of cell, usage strain, maintenance routine, temperature, and the number of charge cycles. Generally, a higher battery capacity results in a longer operation time.

The battery capacity may decrease to approximately 80% of its original capacity after 300–500 charge/discharge cycles. With proper care, the battery can have a lifespan of up to 3 years.

Water resistant is for rain water only. Do not submerge the battery or the whole light into water when cleaning. Clean the light with a soft damp cloth when needed."

## Battery Performance

Battery performance is significantly affected by temperature variations:

•**Low Temperature:** At 0°C, capacity decreases by 5–10%, reducing operation time by 50%. At -20°C, capacity drops by 30%, potentially shortening operation time by 70%. Performance returns to normal when the temperature rises to 20°C.

•**Self-Discharge Rate:** At room temperature, the battery loses about 1% of its capacity per day. When stored at 40°C, the self-discharge rate increases, leading to a loss of approximately 5% of capacity per day.

To maintain optimal battery performance, avoid exposing it to extreme temperatures and store it in a cool, dry place.

If you do not use the battery for a long time be sure to recharge the battery every 3 months.